



MARINE SQUARE

— SHOP IN STYLE —



JMS Buildtech Pvt. Ltd.

 PLOT NUMBER 10, THIRD FLOOR, SECTOR 44, GURGAON, HARYANA - 122002

 Call: 8010000777 | Website: www.jmsbuildtech.com

Disclaimer: The pictures, designs, facilities, plans, images, specification and other details herein are merely an indication for the purpose of depicting the appearance of the development at the project—“Marine Square”. The visuals herein are for illustration and purely symbolic representation of the eventual development, whereas the retail, anchor store, multiplex, food court, office space etc., shall be sold and developed in the manner and form stated in the Buyer’s Agreement. The said information provided herein will not be construed as an advertisement. Any decision of buying or investing in the Project—“Marine Square” should be upon complete verification of all the details including area, specifications, services and other relevant terms independently with the authorized sales team/ Company at the site office. We will under no circumstance be liable for any loss, expense or damage including, without limitation, indirect or consequential loss or damage, or any expense, loss or damage whatsoever arising from use, or loss of use, of data/information mentioned herein. License No. 99 of 2014 dated 13/08/2014, Commercial Colony measuring 2 acres, Licensee: M/s JMS Buildtech Pvt. Ltd., Developer: M/s JMS Buildtech Pvt. Ltd., Building Plans approval No. ZP-1162/SD/BS/2018/2653, dated 17/01/2018. Original approvals available at Corporate Office, 1 sq. mtr.= 10.764 sq.ft., HRERA No. 22 of 2018 dated 02/02/2018. *T&C Apply.



Give into the
Beauty & Drama
of a Mediterranean panorama



When cultures mingle on a palate of Marine architecture, it unfolds the best of identities and experiences. A European twist to the feeling of belonging brought into play to make everything around you more lavish.

Welcome to

**MARINE
SQUARE**



A space that speaks luxury. A space that speaks style.



When life
deserves lavishness
with simplicity.



Embraced with a spirit of abundance and inspired with a touch of the Mediterranean, Marine Square is a one stop shopping destination for your needs of luxurious shopping experience.

Experience exuberance in style.





Because we know where you want to be



Set foot in the most extravagant shopping phenomenon that enchants its way into your heart understanding the tiny details of a vibrant lifestyle that comes to those who know where they want to be.

A space that becomes your shopping companion.

For the connoisseur of excellence in dining.



A shopping experience garnished with the bounty of great food is satisfaction guaranteed to the core. We present to you an exquisite gamut of gluttony for the voracious food enthusiast in you.

Myriad collection of delicacies.





Art, culture and
experience
bundled together.



Assurance of a time well spent in a space well deserved the perfect blend of cineplex and cinema, when the day to day events traverse into day to day euphoria.

A treasure chest of countless feeling of joy.



For the finest of simplistic details



Adhere to your everyday needs. One destination that
enthalls your demands of the exquisite ordinaire.

Especially curated Mega Hypermarket
for a hyper realist shopping experience



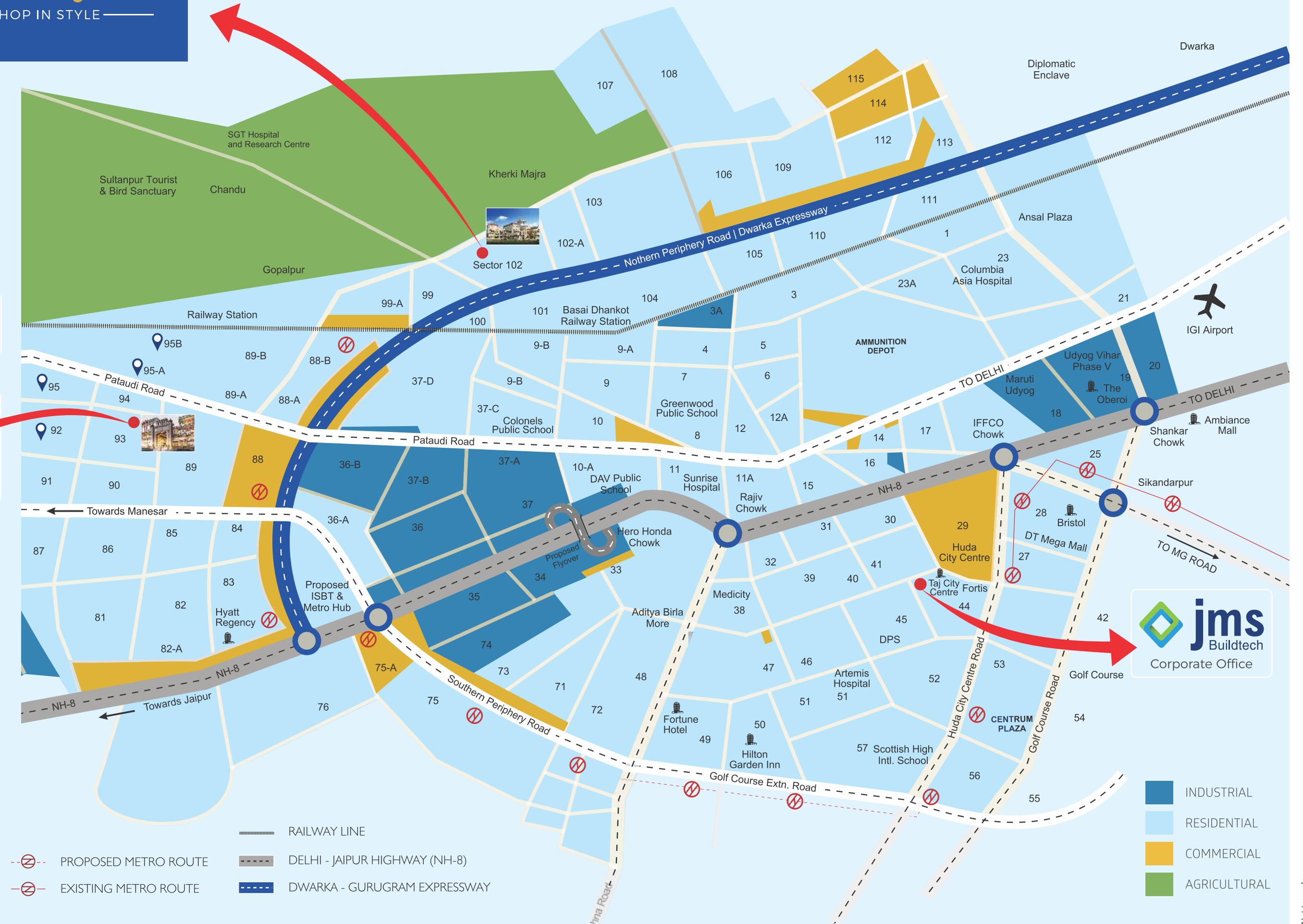
MARINE SQUARE
SHOP IN STYLE

The Advantages of Location

- Strategically located alongside Dwarka Expressway surrounded by premium residential areas with an expectation of 5000 more families shifting in the same locale.
- In close proximity with proposed golf course by DDA in Delhi.
- Excellent connectivity with the IGI Airport, NH8 & proposed Diplomatic Enclave 2.
- 10 minutes drive to proposed AIIMS.



JMS Proposed Development



PROPOSED METRO ROUTE
 EXISTING METRO ROUTE
 RAILWAY LINE
 DELHI - JAIPUR HIGHWAY (NH-8)
 DWARKA - GURUGRAM EXPRESSWAY



INDUSTRIAL
 RESIDENTIAL
 COMMERCIAL
 AGRICULTURAL

*Not to scale

Superior Advantages in your Reach

- Strategically situated on 75 metre wide road.
- Low Maintenance Module, Double Height Retail Shops on Ground Floor.
- Dedicated segments of retail spread across Ground, First and Second Floors.
- Food Court on the Second Floor.
- 5 screen multiplex on Third and Fourth Floor.
- Multi-cuisine restaurants, outdoor cafes, and hygienic Street Food Zone.
- Hypermarket with an area of over 25000 sq. ft.
- Every retail outlet has street level entrance overlooking a high activity pedestrian walkway .
- Maximum units have exposure to central atriums & external softscape with water fountains.
- Comfort and convenience of escalators & high speed elevators.
- Comfortable and wide passage for shopping at all levels.
- Recreational facilities for all age groups.
- Multi-Level Basements catering to growing parking requirements.
- 100% Power Backup & 24x7 security with CCTV surveillance.



Embrace the details
of the finest luxury





LEGEND

1. Pedestrian Entry / Exit
2. Vehicular Entry Exit / Exit
3. Guard Room
4. Feature Wall
5. Signage
6. Arrival Court
7. Activity / Shopping Street
8. Drop off / Pick up
9. Drop off Feature
10. Display Area / Lawn
11. Water Feature / Fountain
12. Coffee Shop / Cafeteria
13. Basement Ramp
14. Street Furniture / Seats
15. Sunken Court
16. Feature Plantation
17. Buffer Plantation
18. Accent Tree
19. Street Food

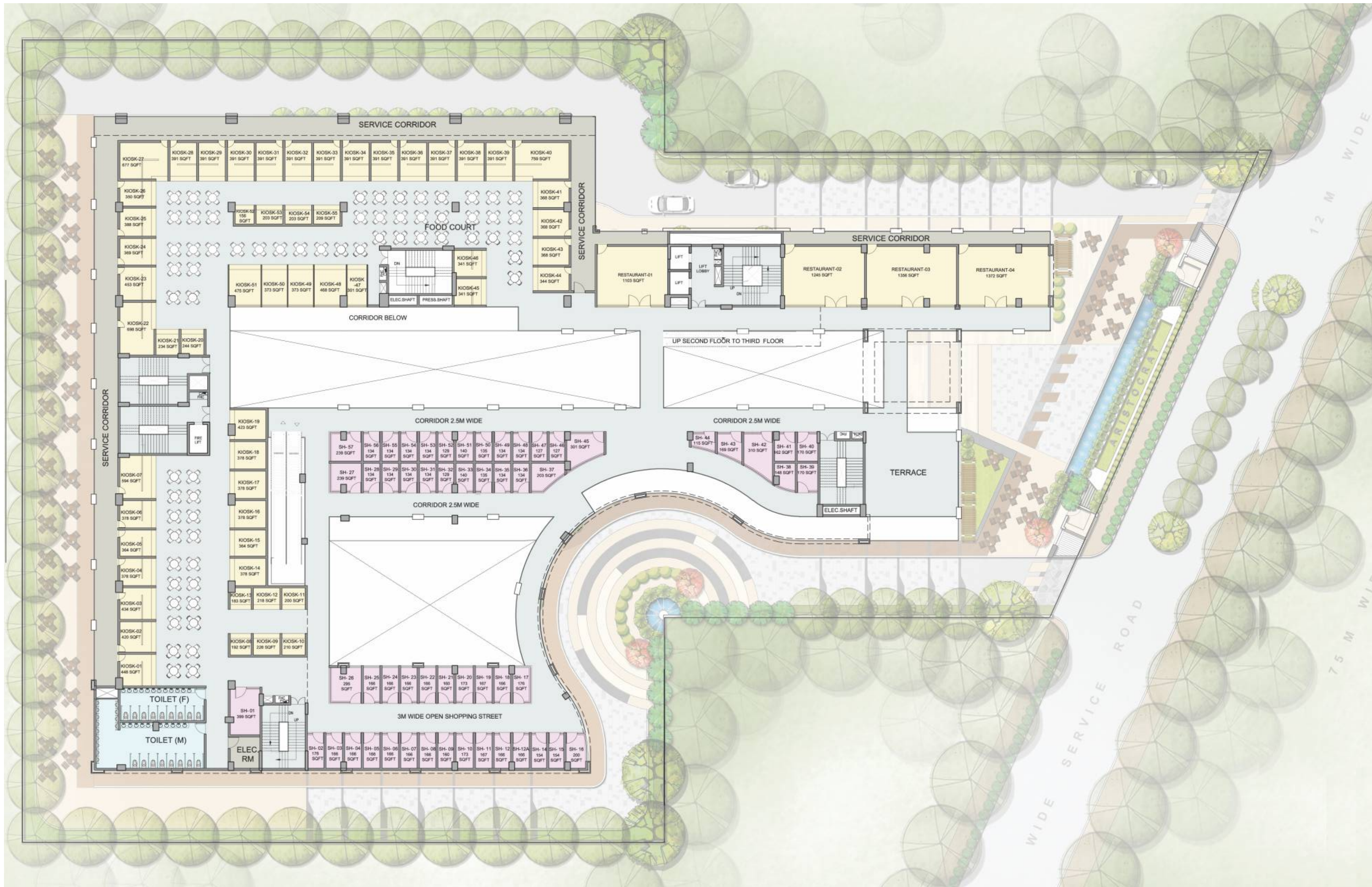
Ground Floor Plan

*Not to scale



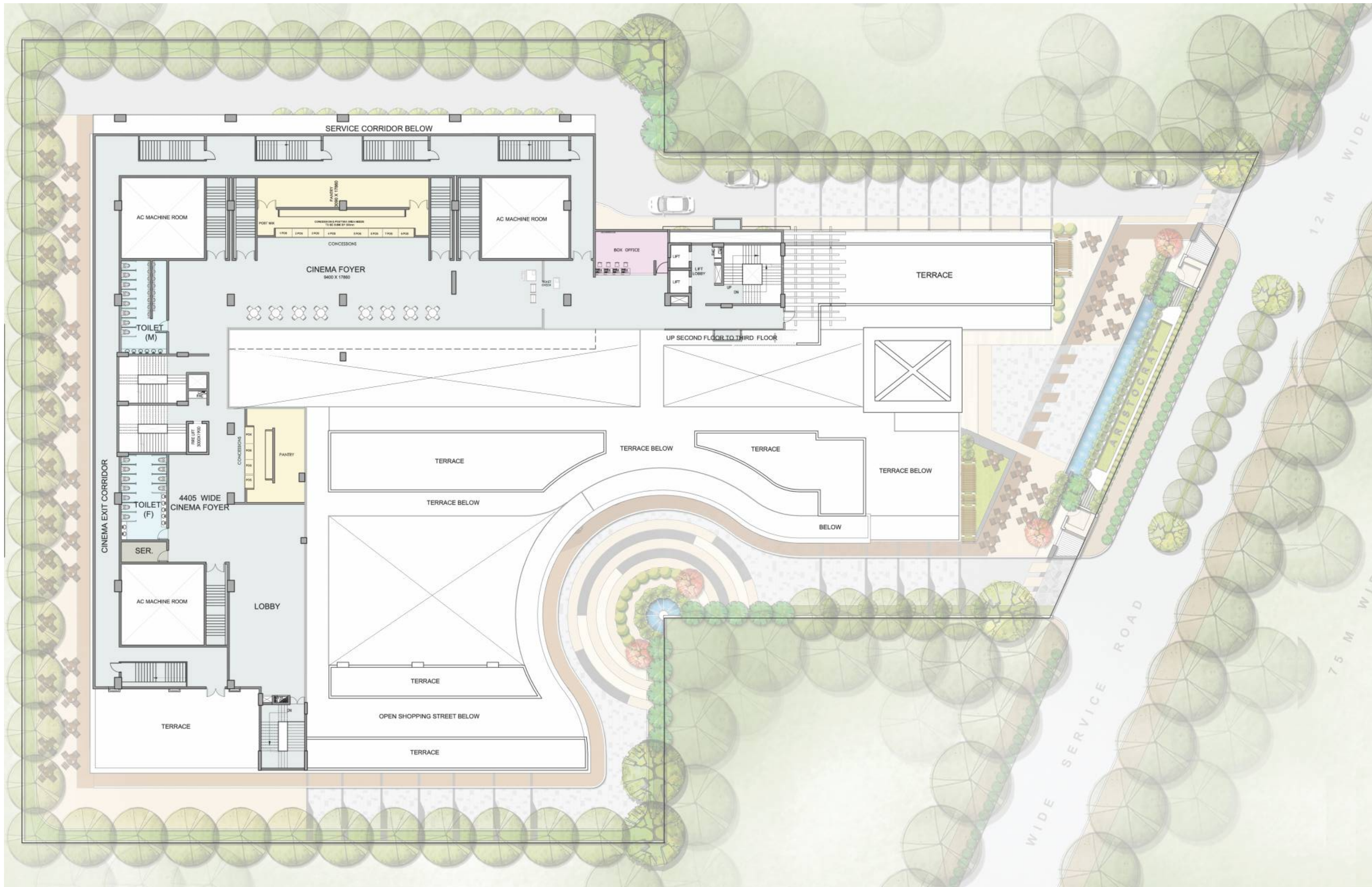
First Floor Plan

*Not to scale



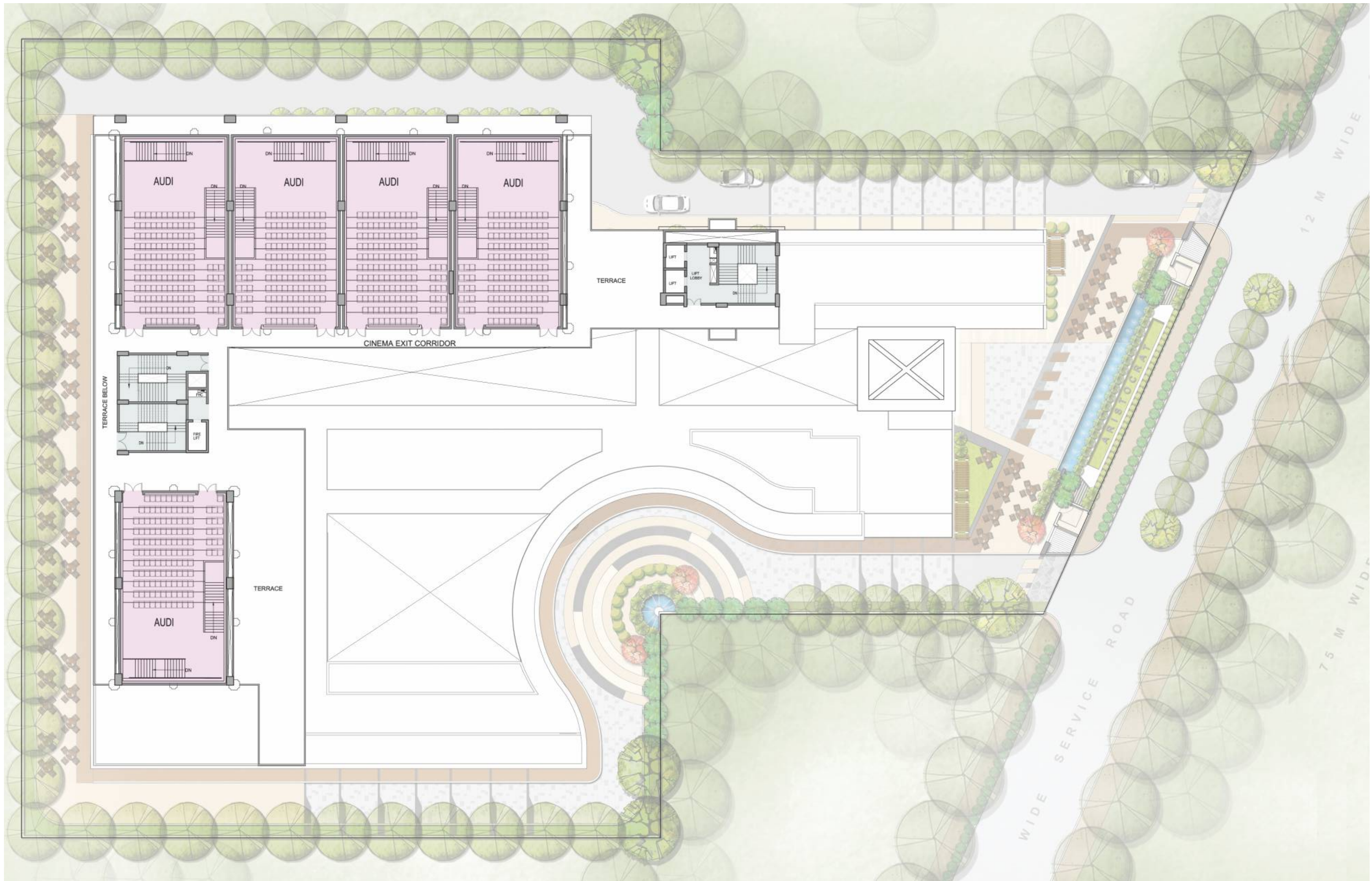
Second Floor Plan

*Not to scale



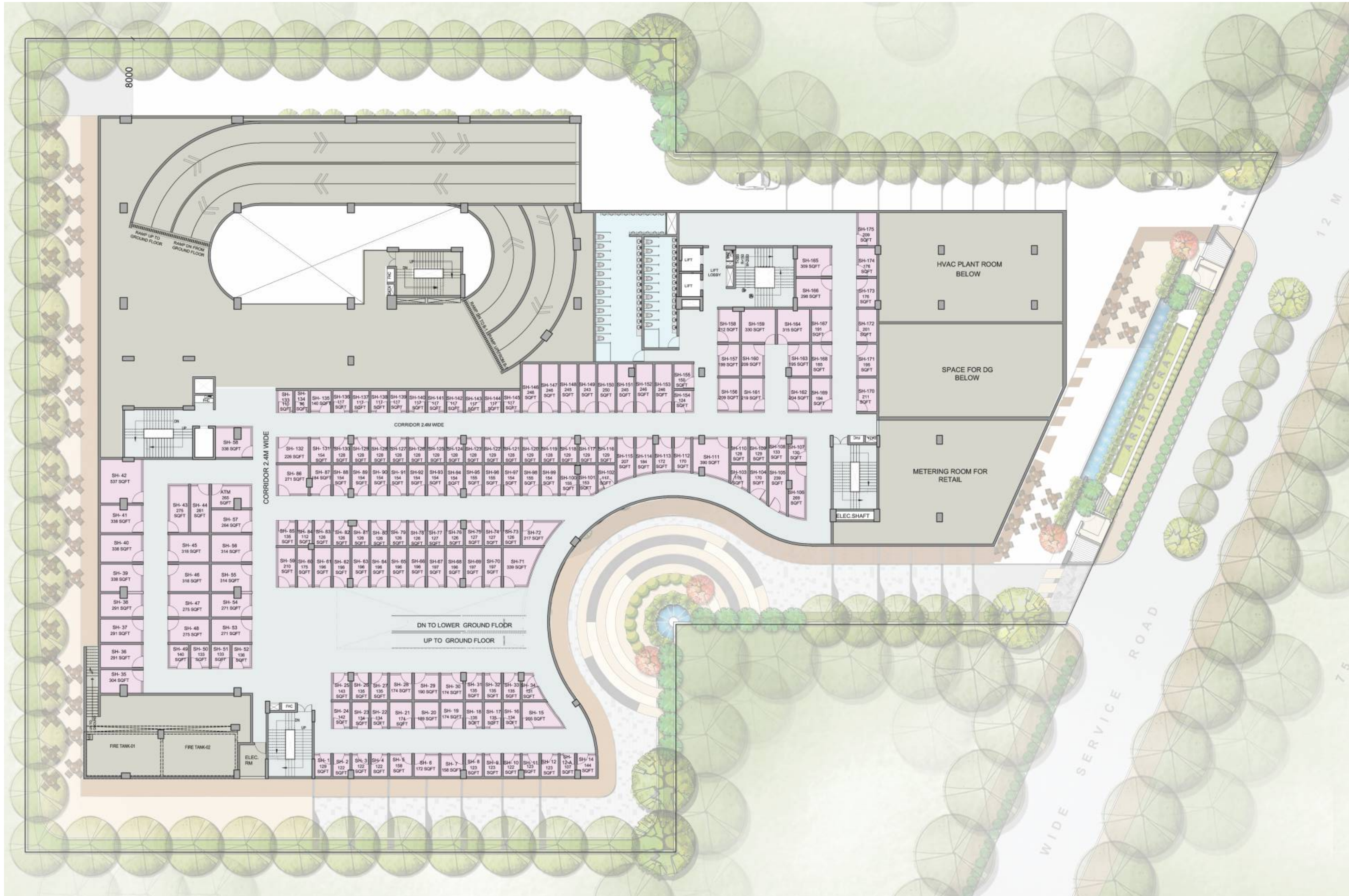
Third Floor Plan

*Not to scale



Fourth Floor Plan

*Not to scale



Lower Ground Floor Plan

*Not to scale



We are JMS Buildtech



A full spectrum real estate conglomerate and the most heralded real estate debutante in the entirety of the NCR.

With our vision to build an organization that affirms commitments, integrity and transparency to its core by delivering on our promises with utmost importance.

Our mission is to bridge the gap between the stakeholders and the organization with our exceptional standards of professionalism and trust, we believe in revolutionizing the real estate arena.

**BEYOND CONSTRUCTION
IT'S COMMITMENT**